

NAAMES

WX Briefing

Tuesday, April 03, 2018

Michael Shook

Forecast Highlights

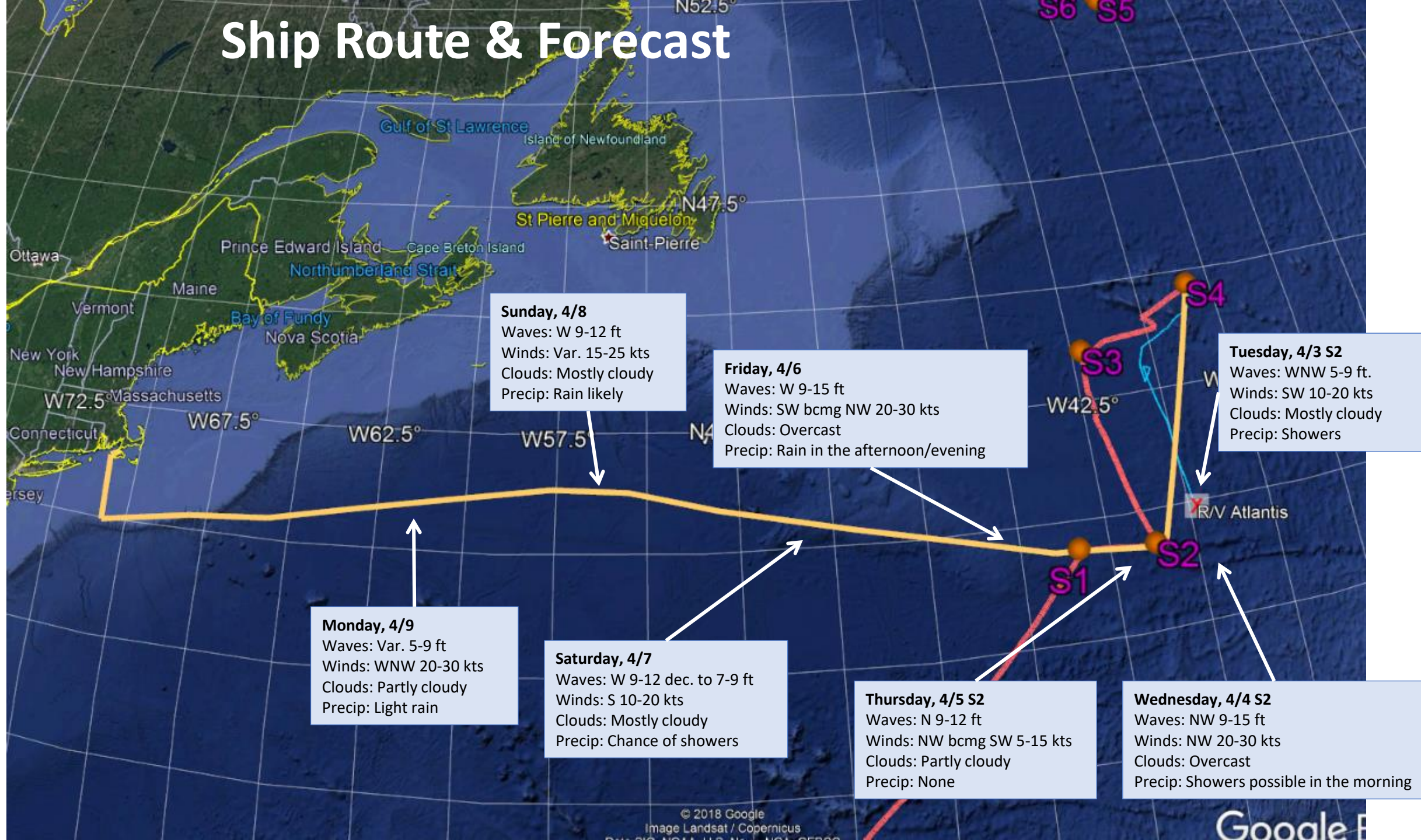
High pressure tries to rebuild over the central North Atlantic over the next few days before being pushed off by a system late in the week.

- **Model agreement:** Models continue to agree fairly well through Friday, but diverge on the potential development of a system over QC/NB Saturday.
- **Next system:** A system moves up the East Coast and into Labrador by Friday, pushing a cold front toward the ship Friday evening
- **Ship:** High pressure moves eastward over S1/S2 Wednesday-Friday morning, but waves may remain slightly elevated due to strong storms elsewhere in the basin
- **St. John's:** Partly cloudy through Wednesday afternoon. A storm will bring snow and ice (up to 3-5") Wednesday night and Thursday morning before transitioning to rain later on Thursday. High winds persist Thursday-Saturday, with another potential storm Saturday.

Forecast Summary

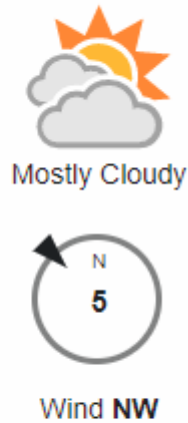
Day	St. John's	Ship Location	Ship Weather
Day 1 Wednesday 4/4	Increasing clouds, snow/ice overnight Morning low: 24; High: 39 Winds: WSW 10-20 mph Evening accumulation ~3"	S2d	Waves: NW 9-15 ft Winds: NW 20-30 kts Clouds: Overcast Precip: Showers possible in the morning
Day 2 Thursday 4/5	Wintry mix transitioning to rain, then ending Morning low: 30; High: 49 Winds: SW 20-30 mph Additional accumulation ~1" + ice	S2f	Waves: N 9-12 ft Winds: NW bcmg SW 5-15 kts Clouds: Partly cloudy Precip: None
Day 3 Friday 4/6	Cloudy and windy Morning low: 31; High: 33 Winds: SW 25-35 mph	Transit to WHOI	Waves: W 9-15 ft Winds: SW bcmg NW 20-30 kts Clouds: Overcast Precip: Rain in the afternoon/evening
Day 4 Saturday 4/7	Rain and snow becoming rain; windy Morning low: 27; High: 38 Winds: SSW 20-30 mph Morning accumulation ~2"	Transit to WHOI	Waves: W 9-12 dec. to 7-9 ft Winds: S 10-20 kts Clouds: Mostly cloudy Precip: Chance of showers
Day 5 Sunday 4/8	Partly cloudy with snow showers in the evening Morning low: 28; High: 36 Winds: WSW 10-20 mph Evening accumulation 1-2"	Transit to WHOI	Waves: W 9-12 ft Winds: Var. 15-25 kts Clouds: Mostly cloudy Precip: Rain likely
Day 6 Monday 4/9	Wintry mix becoming rain, then ending; windy Morning low: 30; High: 38 Winds: WSW 20-30 mph Additional accumulation ~1" + ice	Transit to WHOI	Waves: Var. 5-9 ft Winds: WNW 20-30 kts Clouds: Partly cloudy Precip: Light rain

Ship Route & Forecast

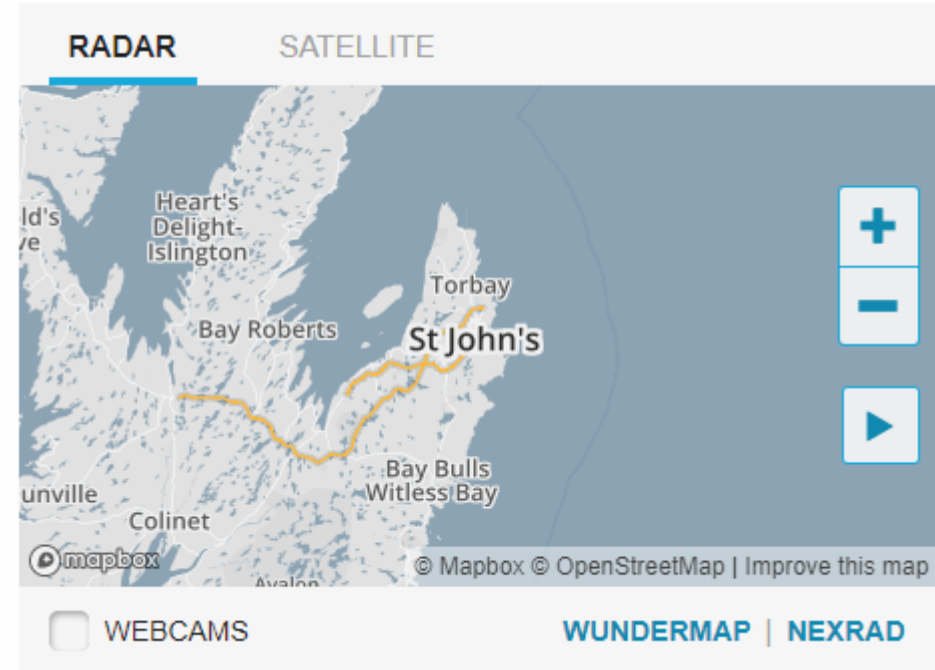


Current Conditions at St. John's

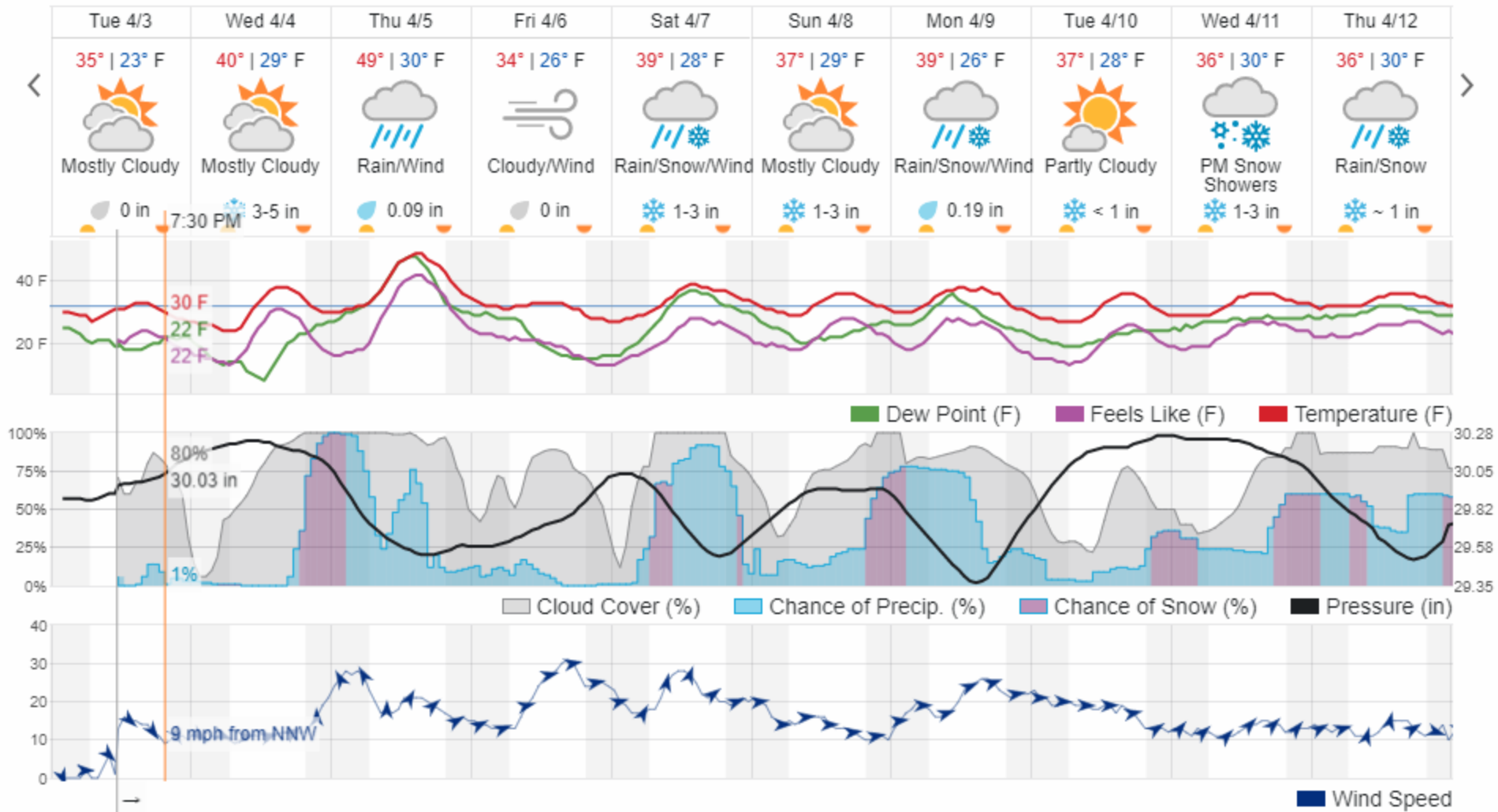
© 10:07 AM ADT on April 3, 2018 (GMT -0300) | Updated 2 minutes ago



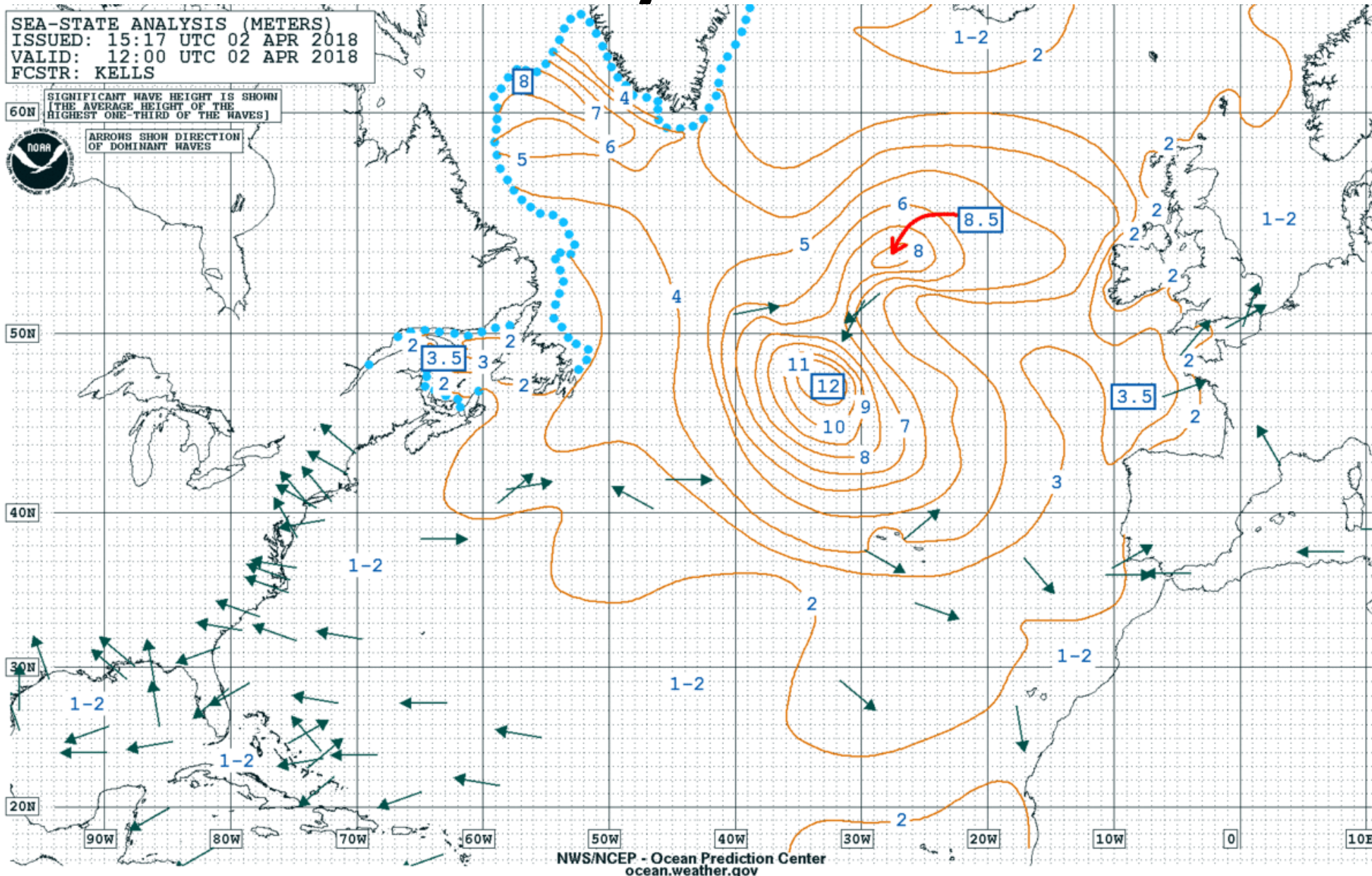
Today is forecast to be **MUCH COOLER** than yesterday.



St. John's Forecast

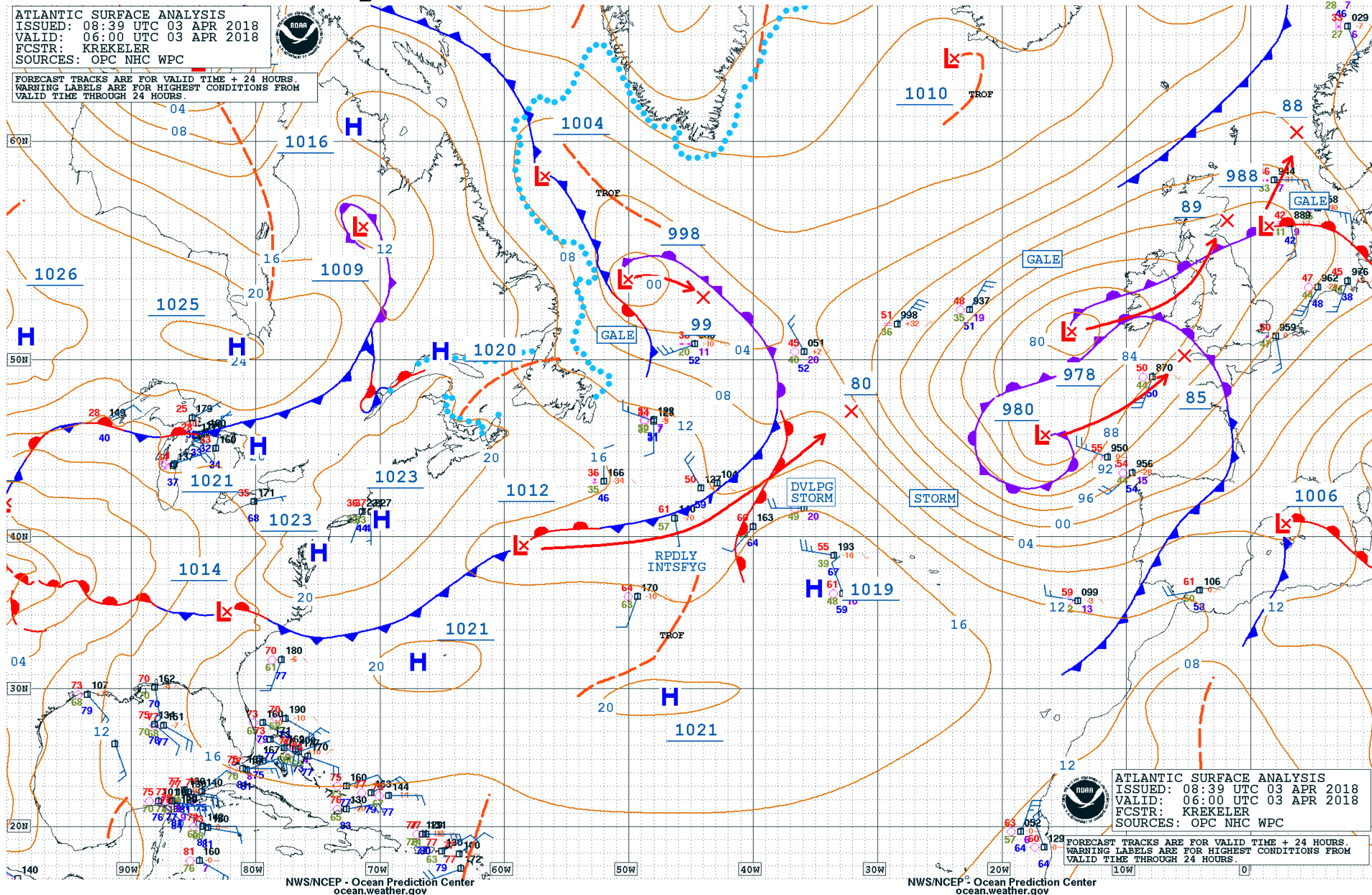


Sea State Analysis



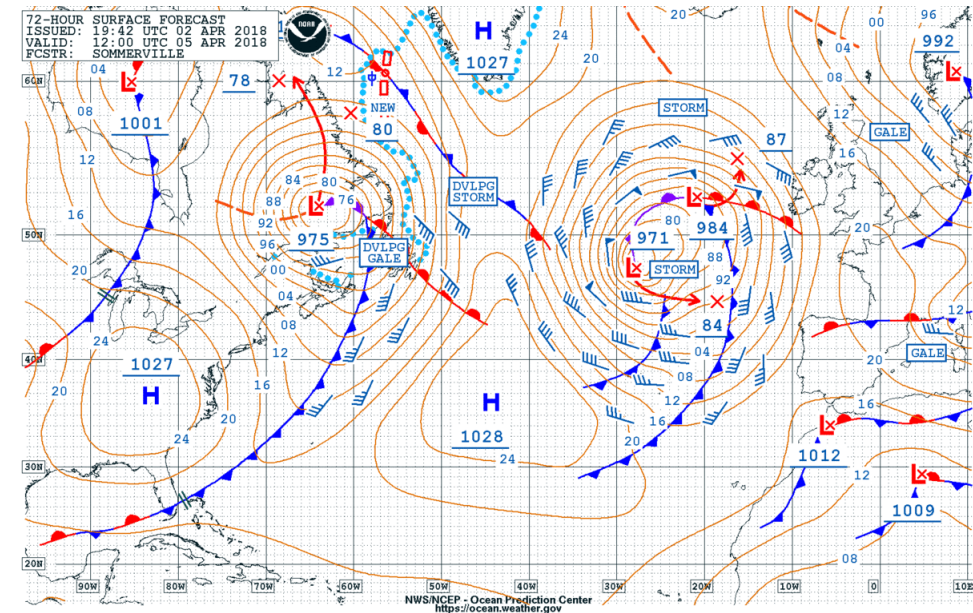
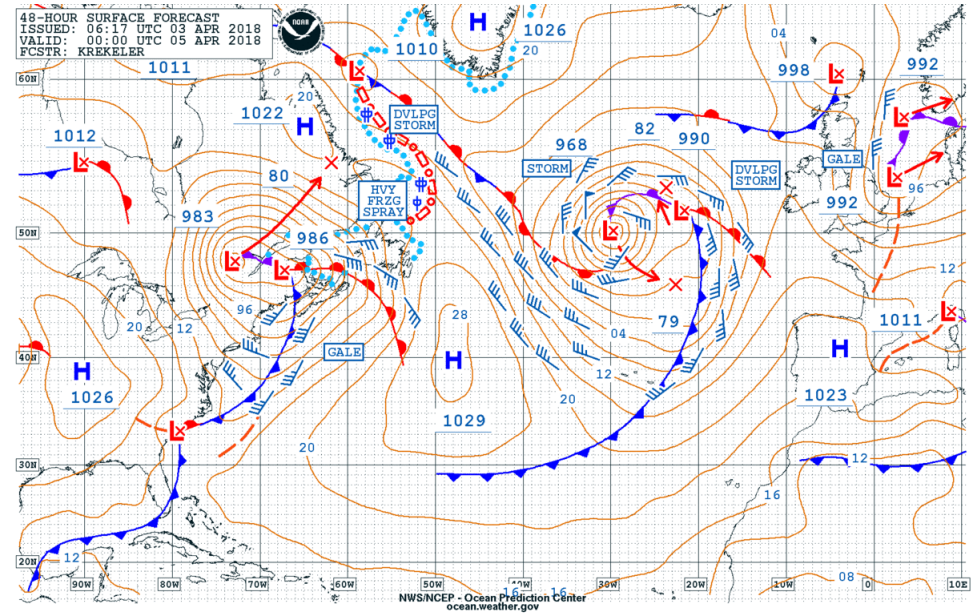
- Significant Wave Height is shown (in meters). This is the average height of the highest one-third of the waves
- Arrows show direction of dominant waves
- Product is a day behind

Surface Analysis

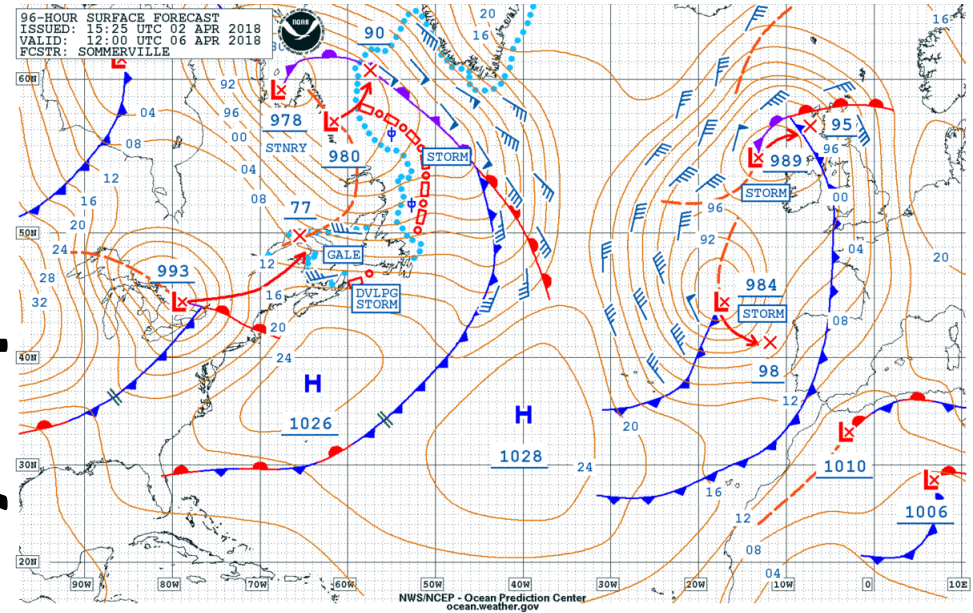


Synoptic Forecast

48 Hour Forecast - Wednesday 10pm Ship Time (UTC-2) 72 Hour Forecast - Thursday 10am Ship Time (UTC-2)



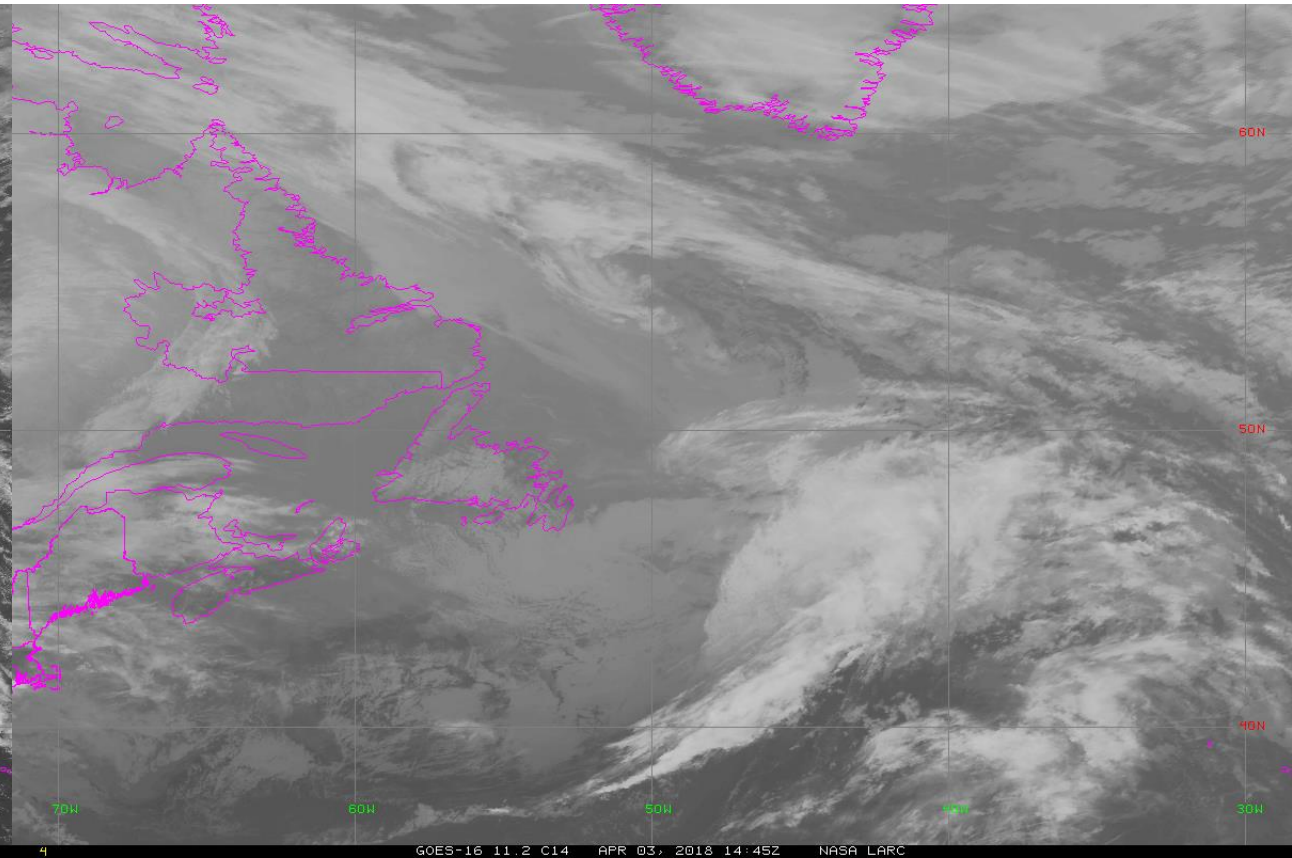
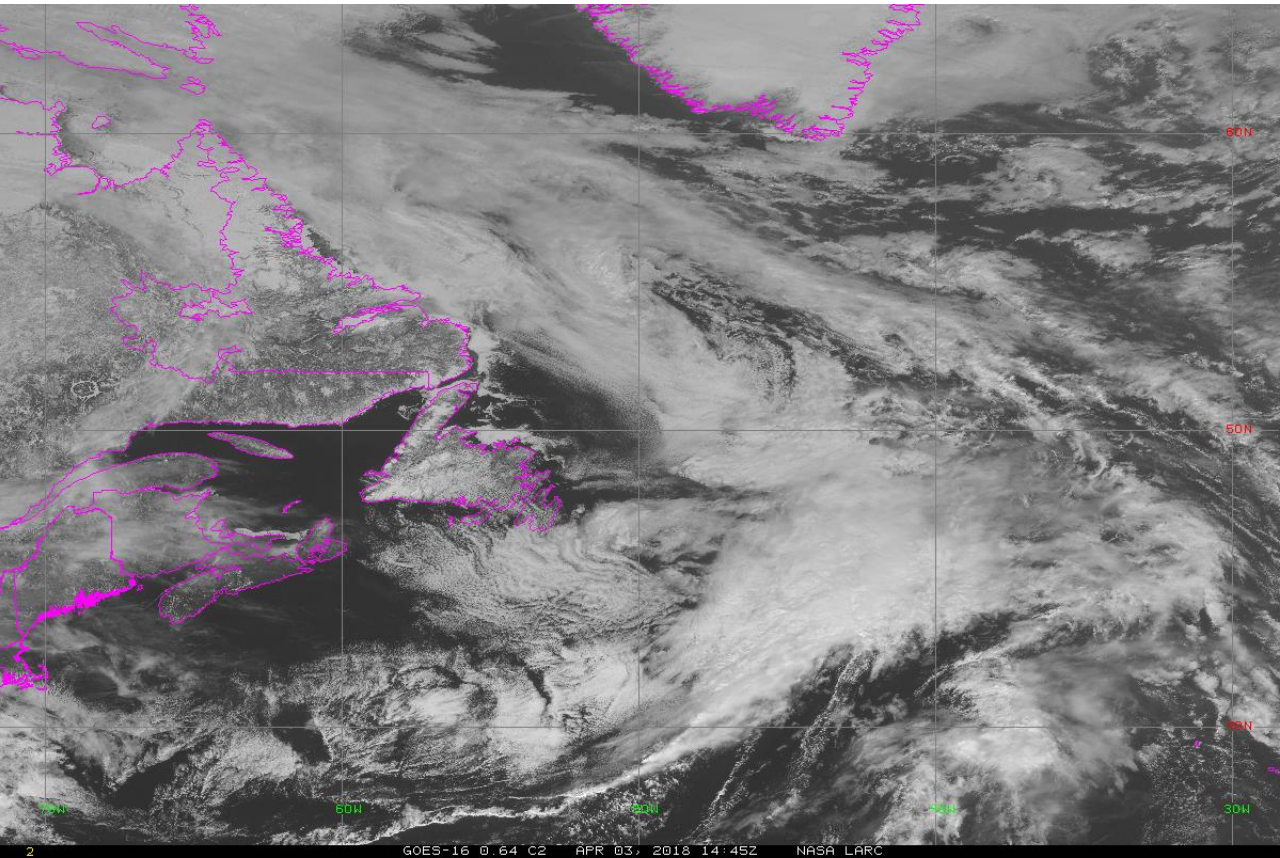
96 Hour Forecast - Friday 10am Ship Time (UTC-2)



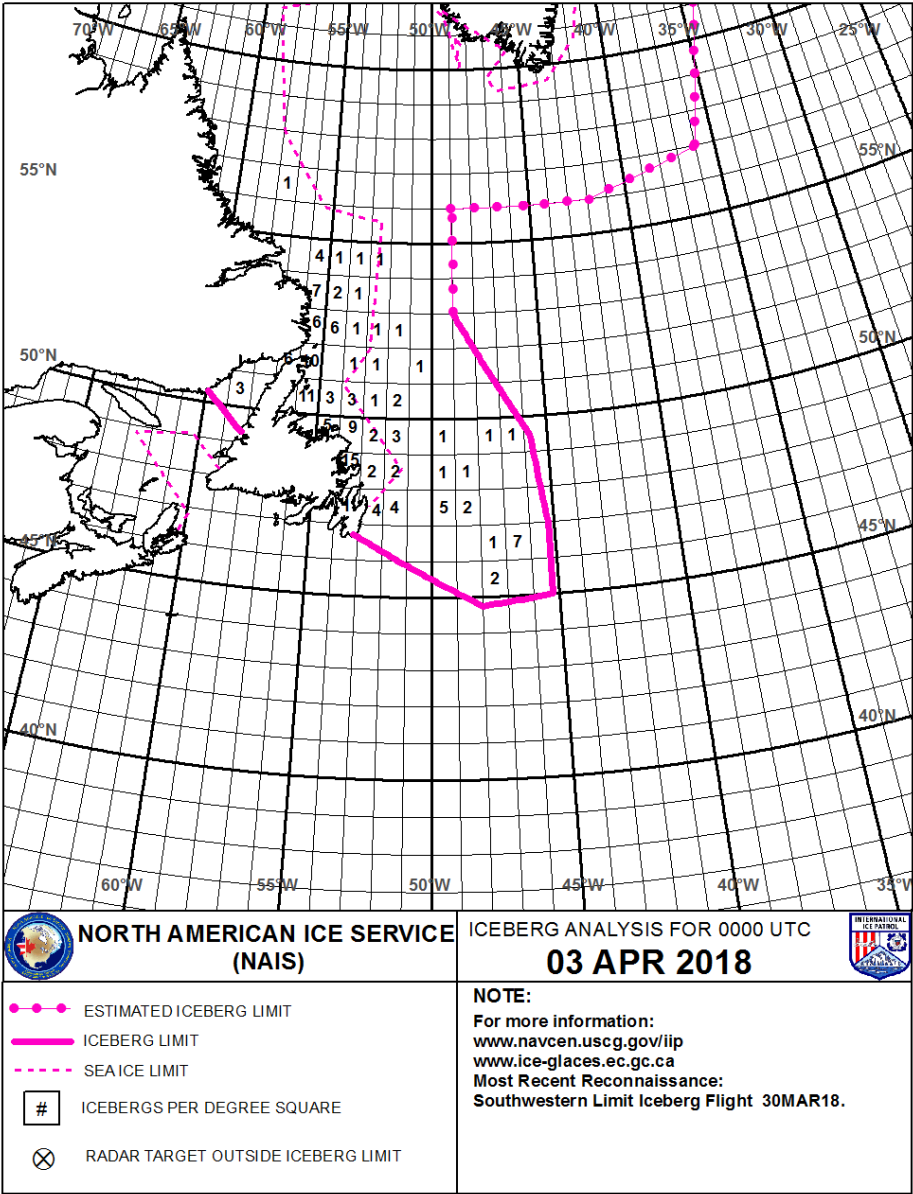
GOES-16 Imagery (4/3 14:45 UTC)

Visible

IR

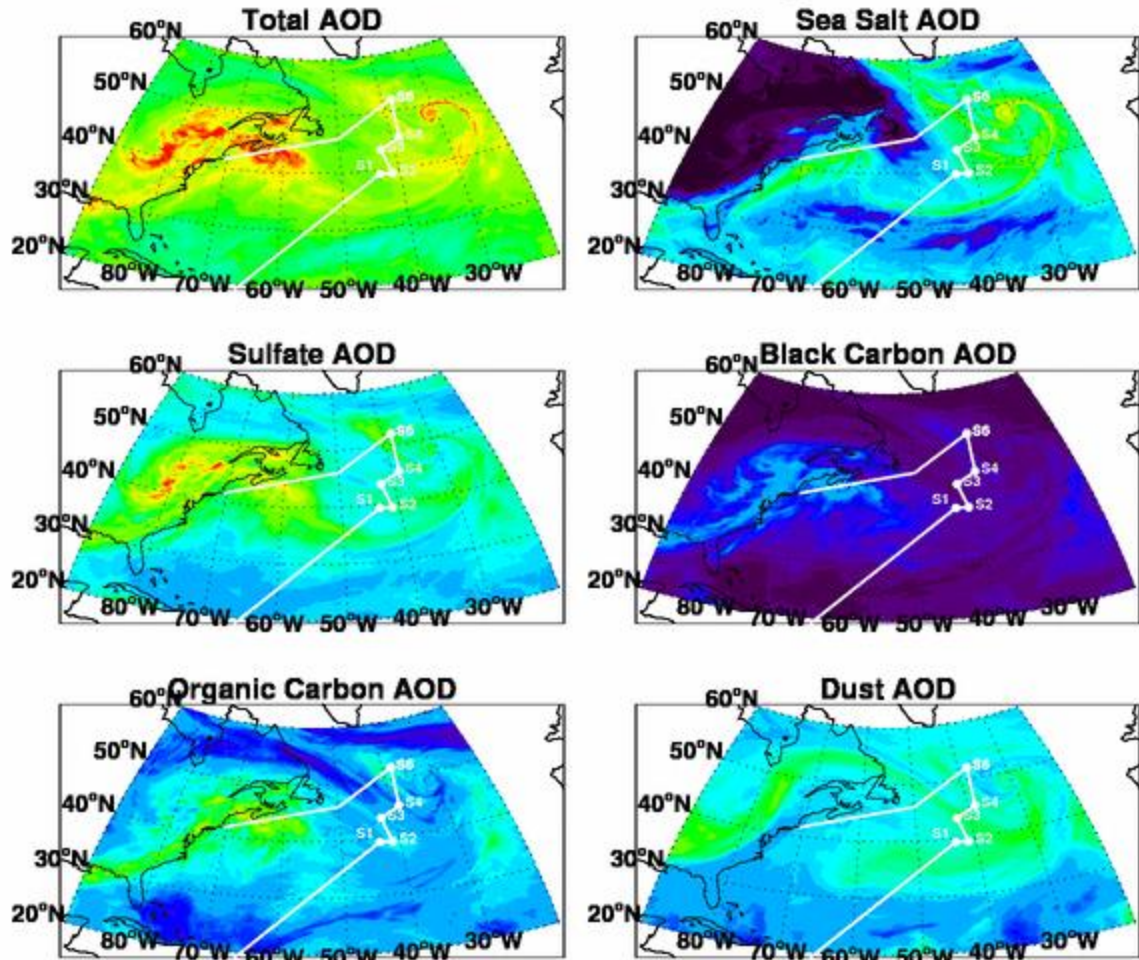


Sea Ice and Icebergs

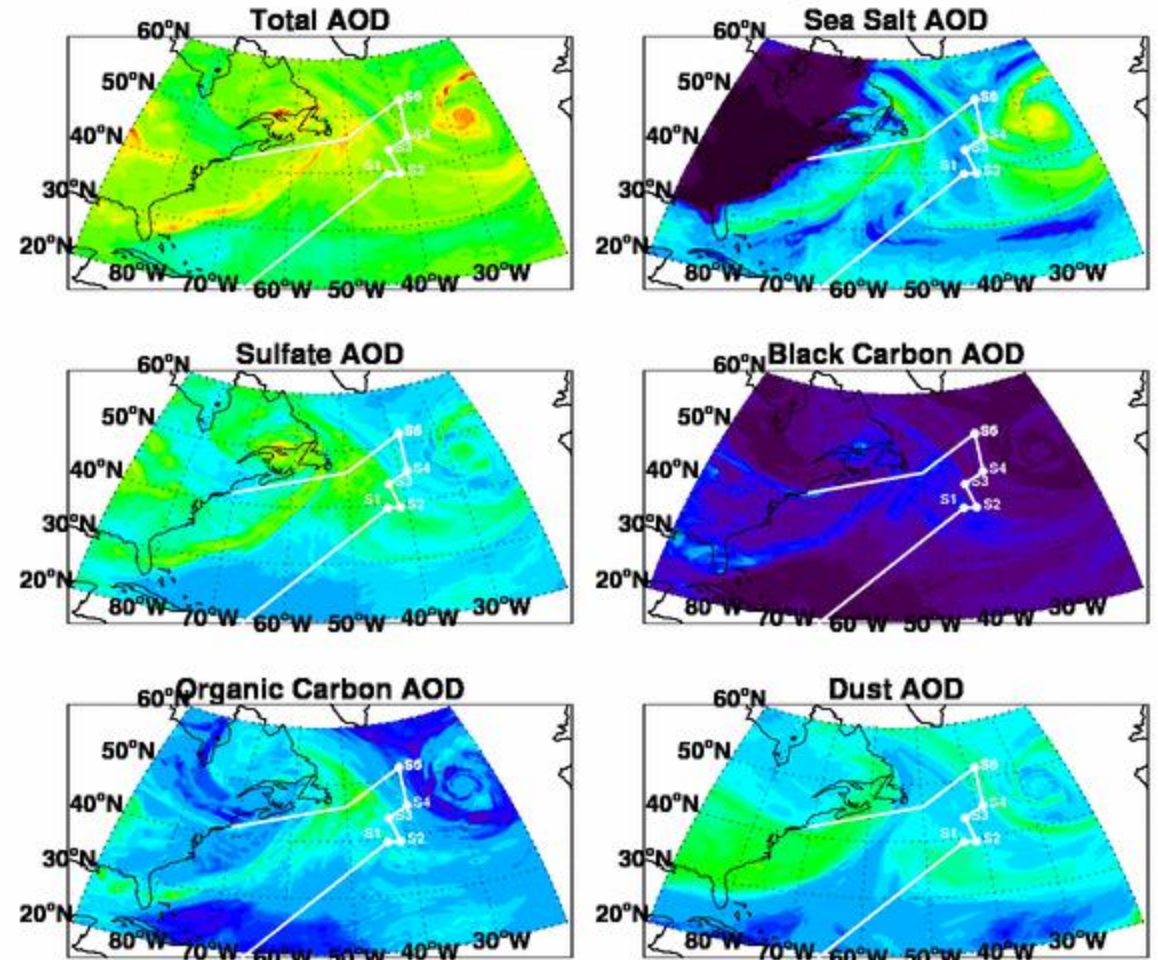


Aerosol Forecast

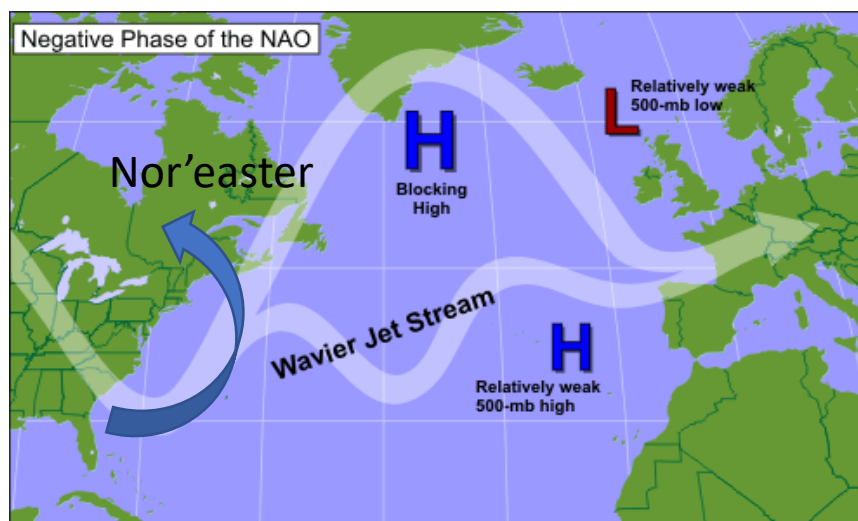
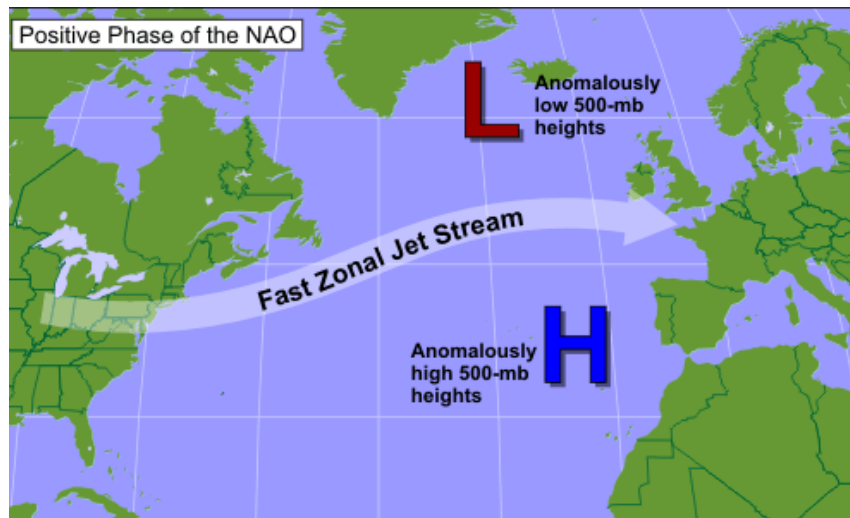
GEOS-FP Forecast 20180404_1500Z



GEOS-FP Forecast 20180405_1500Z



Current NAO



NAO: Observed & ENSM forecasts

